



# Xcluder Fill Fabric Installation Instructions-Single/Bulk Roll

**GMT**  
GLOBAL MATERIAL TECHNOLOGIES, INC.  
750 West Lake Cook Road  
Buffalo Grove, IL 60089  
Phone: (847) 495-4730  
[www.buyxcluder.com](http://www.buyxcluder.com)

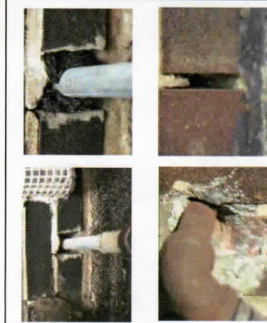
U.S. Patent No. 6,919,117

**Xcluder Fill Fabric** is designed to stop gnawing and burrowing pests from entering your house, apartment, mobile home or building in a safe and environmentally responsive way. For preventing pest intrusion, **Xcluder** is superior and a permanent solution for rodent control!

• **Xcluder** is made from coarse stainless steel wool, which has sharp edges. **ALWAYS WEAR THE GLOVES PROVIDED AND USE CARE IN HANDLING AND CUTTING. AS ALWAYS WITH ANY HOME IMPROVEMENT PROJECT, WHEN WORKING OVERHEAD USE SAFETY GLASSES TO PREVENT LOOSE FIBERS FROM GETTING INTO THE EYES.**

- To contain loose fibers, always cut **Xcluder** over a trash receptacle. **CUT XCLUDER BELOW EYE LEVEL.**
- Do not use **Xcluder** on surfaces that may exceed 270° F.
- Do not use **Xcluder** in electrical enclosures or receptacles.

### TOOLS NEEDED



### STEP 1: IDENTIFY IT

Identify the gaps and spaces where rodents can enter or where there is evidence rodents have entered.



### STEP 2: MEASURE IT

Measure the width and depth of the space using a tape measure as pictured or any other measuring device.



### STEP 3: CUT IT

Use the included sharp scissors to cut a piece of **Xcluder** that is slightly larger than the opening (about 1 1/2x to 2x the width of the opening is usually sufficient).



### STEP 4: FIT IT

Firmly place the **Xcluder** into the opening. Be sure to fill the entire opening, leaving no gaps or spaces.



### STEP 5: PACK IT

Using the blunt side of a screwdriver or included scissors push the material into the opening flush to, or slightly below the surface of the opening. Properly installed, **Xcluder** will expand to form a better seal shortly after installation.