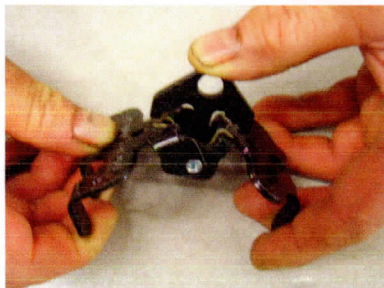


USING YOUR BOOGER™ RETRIEVER



To set your BOOGER retriever, simply open the fingers while using your thumbs to insert the "ears" of the spring trigger into the holes on each side. You will hear a click when correctly set and the fingers will remain open. When retrieving an object, simply drop the BOOGER on it; the trigger will release and the fingers will grasp it. The BOOGER retriever works effectively on any dropped item. Use a strong nylon or braided cord for optimum control.

The BOOGER also picks up bottled water or soda and arrows with the addition of the O-ring (packaged with each BOOGER). Simply position the O-ring around the 2 outside fingers and shoulder when closed, then open to set as usual. Should you lose the O-ring, a small flat rubber band will also work in the same manner. The O-ring is only used for retrieving water and soda bottles or arrows (objects with a smooth surface).



The BOOGER weighs only 4.5 ounces, yet easily goes through light brush, is quiet and lifts up to 25 pounds. Inverted to grasp on your treestand or a tree limb, the trigger becomes a handy place to hang accessories (grunt tube, binocs, etc.). *We DO NOT recommend using it to bring up your bow or gun.*