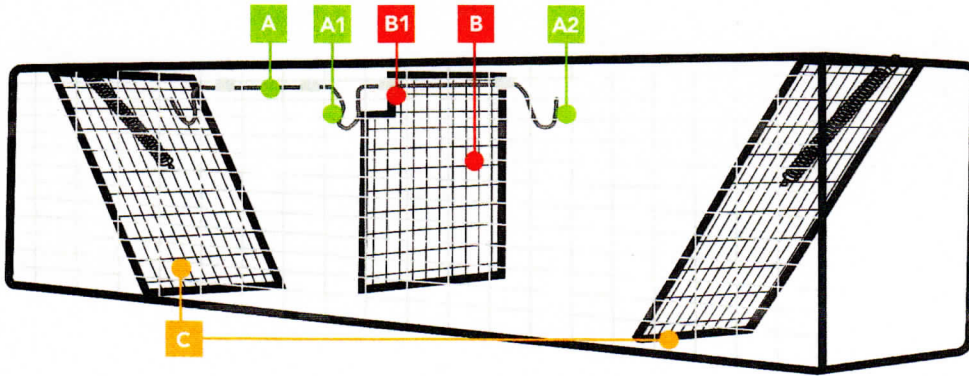


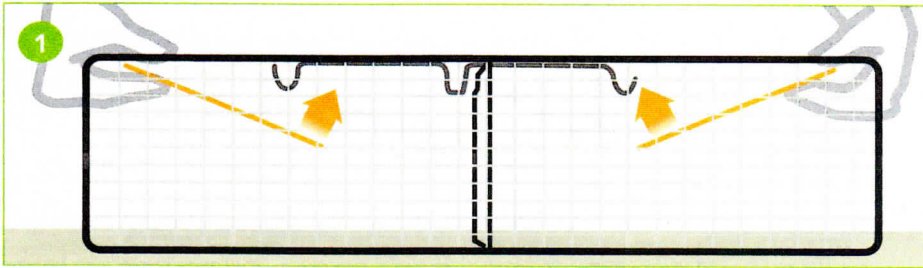
Comstock Swing Panel Trap Instructions



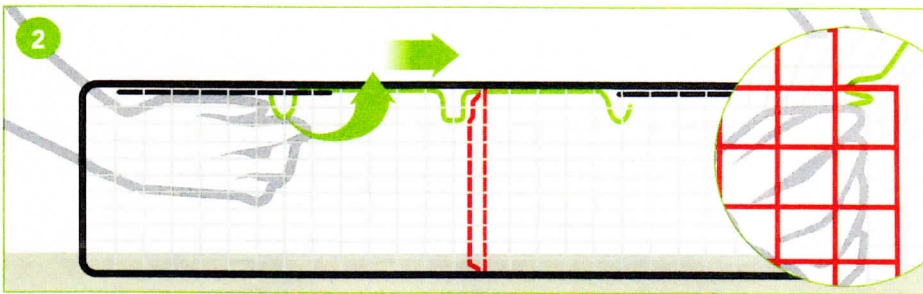
- A** Trigger Rod
- A1** Trigger Stop
- A2** Trigger Door Rest
- B** Swing Panel
- B1** Swing Panel Rest
- C** Spring Loaded Doors

First align the trigger elements

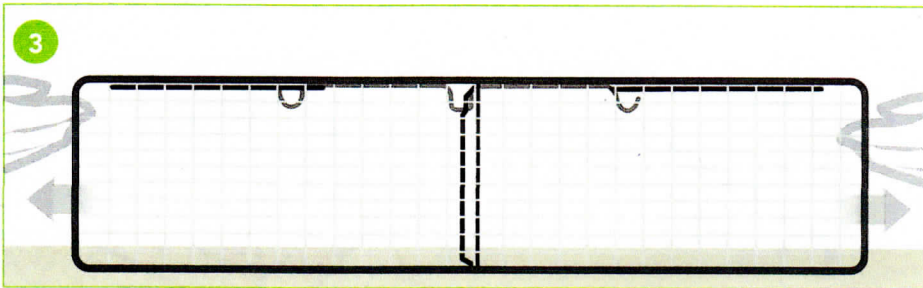
Place trap in front of you so that both doors can be accessed. Make sure the trigger rod is on the side closest to you.



1. Place both hands in trap and lift doors until they touch the top of the trap.



2. While keeping the (C) spring loaded doors open, use one hand to take hold of the (A2) trigger door rest and flip it up and slide over so the (A1) trigger stop sits on the (B1) swing panel rest. The (C) spring loaded doors should be open and resting on the (A2) trigger door rest.



3. Remove hands, your trap is set.