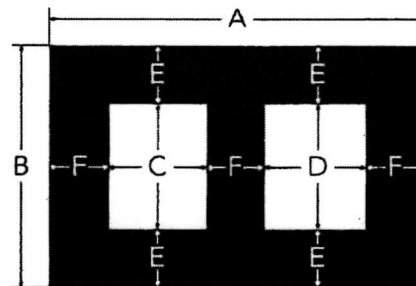


Hy-C Chimney Cap Dimensions for Custom Caps

Big Top Chimney Caps secure to the chimney crown with screws or adhesive. The crown is the area between the flue and the outside top row of brick and is usually made of cement. It can be flat or angled slightly upward toward the flue tile.

Big Tops have a one inch band that is hinged to lay flush on the crown. This one inch band must be added into the calculations to fit the crown. A 26 inch Big Top Chimney Cap needs to sit on a 27 inch area of crown to adhere.



1. **A & B Measurements** – The measurement of the crown of the chimney. These are the outside dimensions of all four sides of the top row of brick.
2. **C & D Measurements** – The inside measurements of each of the flues in the chimney.
3. **E Measurement** – The measurement from the outside of the flue to the long side of the crown.
4. **F Measurement** – The measurement from the outside of each flue to the short side of the crown and the measurement between each flue, if there are multiple flue stacks

Things to keep in mind.....

- Custom models can be created for top mount or outside mount applications
- When determining proper cap size, as required by law, make sure the cover height measures a minimum of 5" from the top of the highest flue tile.
- In situations where oil, coal, or wood pellets are used as the primary source of heat, do not use aluminum or painted black galvanized steel covers.

Draft King Chimney Caps secure to the flue itself with screws.

1. Measure the flue dimensions: length, width, and height.
2. Stainless Steel leg Kits are available as an option.

For a Band Around or Skirted Custom Cap

1. Take the above measurements for a Big Top
2. Also measure the distance between the first row of brick, or chimney outer edge, to the tallest flue tile height. It should be a linear dimension even though you are measuring at an angle. We do not need the angle or degree measurement just the distance or linear measurement.