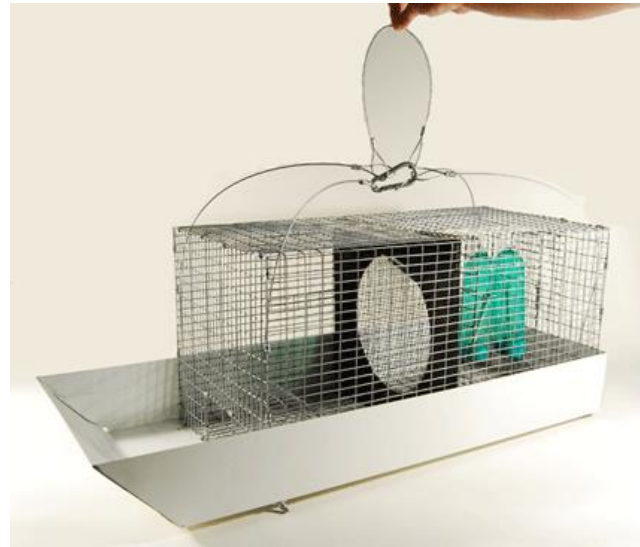




P.O. Box 538
East Granby, CT 06026
Ph: (860) 844-0101
www.WildlifeControlSupplies.com

Product Overview - WCS Sparrow Sled

The **WCS Sparrow Sled** is a unique hanging trap designed for discreet applications in high traffic areas (think “big box” stores). Its size (24”x13”x13”) allows for a large catch capacity while several exclusive features make it ideal for sensitive customers. Water bottles prevent birds from dehydrating and expiring and the sled provides the birds with an outer perching area and captures any droppings or other debris that may fall from the trap. It also has the added benefit of obscuring the contents of the trap from view when observed from below.



Sparrow Sled Instructions

The Sparrow Sled’s support cables and quick-release carabineer allow it to be quickly hung. It can be snapped onto any wire or rope loop or attached to a simple pulley system for easy baiting, checking and cleanout. *(If you are hanging the trap with a pulley system, be sure that the line is fastened in a discreet location, preferably out of reach of passers-by to prevent tampering.)*

The Sparrow Sled uses passive one-way doors. Working much like a lobster trap, these doors allow the sparrows to pass through in one direction only: into the holding chamber. The dual-chamber design provides added security against escapes.

Bait the first chamber to entice the birds into the trap. Place food and water in the second chamber to help move them forward and **sustain** them for the duration of their stay. **WCS recommends using ample amounts of white or red millet as bait. This can be “on the stalk” as found in pet supply stores or loose on the floor of the Sparrow Sled.** *Be certain to check the trap at intervals established by your state’s laws, and more often if possible.* By checking the trap frequently and maintaining the levels of food and water you will minimize trap fatalities.

Two water bottles are provided, each with two mounting options. Using the spring or the bracket (this is a matter of personal preference) mount them in the water cage with the necks extending into the holding chamber.